



# Safe People Flow® for horizontal speed

KONE TransitMaster™ 165

[www.kone.com](http://www.kone.com)

Dedicated to  
People Flow™



# Safe People Flow for horizontal speed

With over 110 years of experience and a strong track record in safety, KONE is your trusted partner, dedicated to ensuring smooth and safe People Flow. KONE escalators and autowalks use our proven, reliable technology designed to meet the wide ranging needs of different buildings worldwide.

KONE TransitMaster™ 165 is an autowalk designed specifically for airports and busy hubs, where people need to move quickly and conveniently between different areas in order to arrive to their destination faster.

- 01 Industry-leading reliability and quality
- 02 Differentiate with a redefined user experience
- 03 Safety = peace of mind
- 04 Reduced environmental impact
- 05 Plan for success with KONE as your partner
- 06 Flexibility to match your building requirements



## Key specifications



Symmetric design



Indoor environment



Travel length  
20–100 m



ISO 25745-3 Energy  
performance class  
up to A+++



Pallet width  
1000 / 1200 / 1400 mm



Digital  
experience

Read more about  
KONE Escalator DX



[www.kone.com](http://www.kone.com)



# Industry-leading reliability and quality

All KONE solutions follow strict quality standards which are dedicated to provide efficient and smooth People Flow experience.

We pay special attention to ensure that the quality and durability of the selected components match the environment and People Flow requirements, minimizing any unplanned downtime.

## **KONE has been a leader in delivering reliable, safe People Flow for more than 110 years**

- Tens of thousands of installations all around the world
- Reliability and safety guaranteed under even the most demanding operating conditions

## **Optimized material selection for quality and reliability:**

- Proven technology on component level
- Usage of wear resistant materials
- Optional permanent monitoring of escalator

## **Certified supply chain**

- Suppliers are required to comply with international standards
- All of our production operations are certified according to the ISO 14001 standard.



## **KONE Kunshan escalator factory**

KONE Kunshan escalator LEED gold certified factory is the largest escalator production base in the world, covering an area of 29,000 square meters. Around 95% of the KONE escalators supplied globally are from the Kunshan factory.

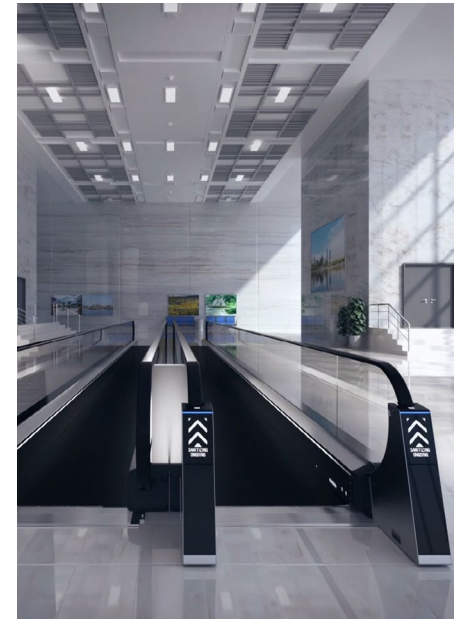
## **The most comprehensive escalator performance test in the industry**

The KONE factory is the first and only factory in the industry to test every escalator produced, for noise, vibration, speed detection, and energy consumption rates – ensuring consistent quality, passenger safety, and excellent ride comfort.



# Differentiate with a redefined user experience

Enhance your escalator in a way that suits you. KONE DX Escalators lets you mix and match features and services, so you can tailor your escalator to what matters most. Transform how people move around your building with next-generation safety and wayfinding tools, and add a little magic to everyday moments. Let's move into the future together.



## KONE Handrail Sanitizer Premium

Encourage safer behavior with visible handrail sanitization, designed to protect passengers against viruses, bacteria and dirt, and make holding on worry-free.



## KONE Escalator Video Monitoring

AI-assisted video monitoring delivers custom insights tailored to your needs, improving performance, optimizing flow, and intelligently identifying risks.



## KONE 24/7 Connected Services

KONE 24/7 Connected Services is a discreet/intelligent way to increase uptime thanks to predictive maintenance and instant alerts that keep people moving around your building smoothly—today and tomorrow.



# Light the way

Deliver intuitive experiences for wayfinding and accessibility with lighting for handrails and skirting—and delight passengers with themes for special occasions.

## KONE Design Lighting

Add a little magic to everyday moments with journeys that inform, guide and delight—from themed lighting to illuminating wayfinding experiences and media screens.





# Safety = peace of mind

All KONE moving walks are equipped with the necessary safety features as required by applicable codes and standards.

Furthermore, should you require solutions to address specific safety concerns related to your People Flow, our sales team will be pleased to offer a selection of optional features tailored to your needs, such as:

- Traffic signalization, skirt lighting, yellow comb segment, step demarcations provide extra visual guidance for passengers to help them to have a smoother and safer ride
- Audible alarms increase clear guidance on moving walk travel direction and improve passengers' attention
- Halogen-free cables
- Provisions for seismic locations
- Extended monitoring options with KONE 24/7 Connected Services and KONE Escalator Video Monitoring

For a complete list of standard and optional safety features please contact your local KONE sales representative.





# Safety = peace of mind



## Extra visual guidance

Traffic signalization, skirt lighting, yellow comb segment, step demarcations provide extra visual guidance for passengers to help them to have a smoother and safer ride.



## Audible alarms

provide clear guidance on escalator travel directions and enlarge users attention.



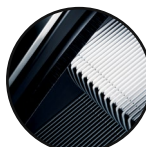
## Fire safety

maximised with halogen-free cables and fire fighting provisions.



## KONE Handrail Sanitizer Premium

continuously reduces bacteria, viruses and dirt from the handrails and encourages users to hold the handrail



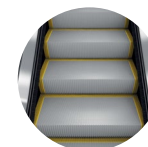
## KONE skirt switch solution

reduces the risk of entrapment



## KONE 24/7 Connected Services

helps you to see the status of the escalator in real time to ensure safe operation.



## Anti slip requirement

Anti-slip grade step surface reduces the chance of passengers slipping.



## Video monitoring

improves operational performance and safety by automatically detecting pre-defined user behaviours.

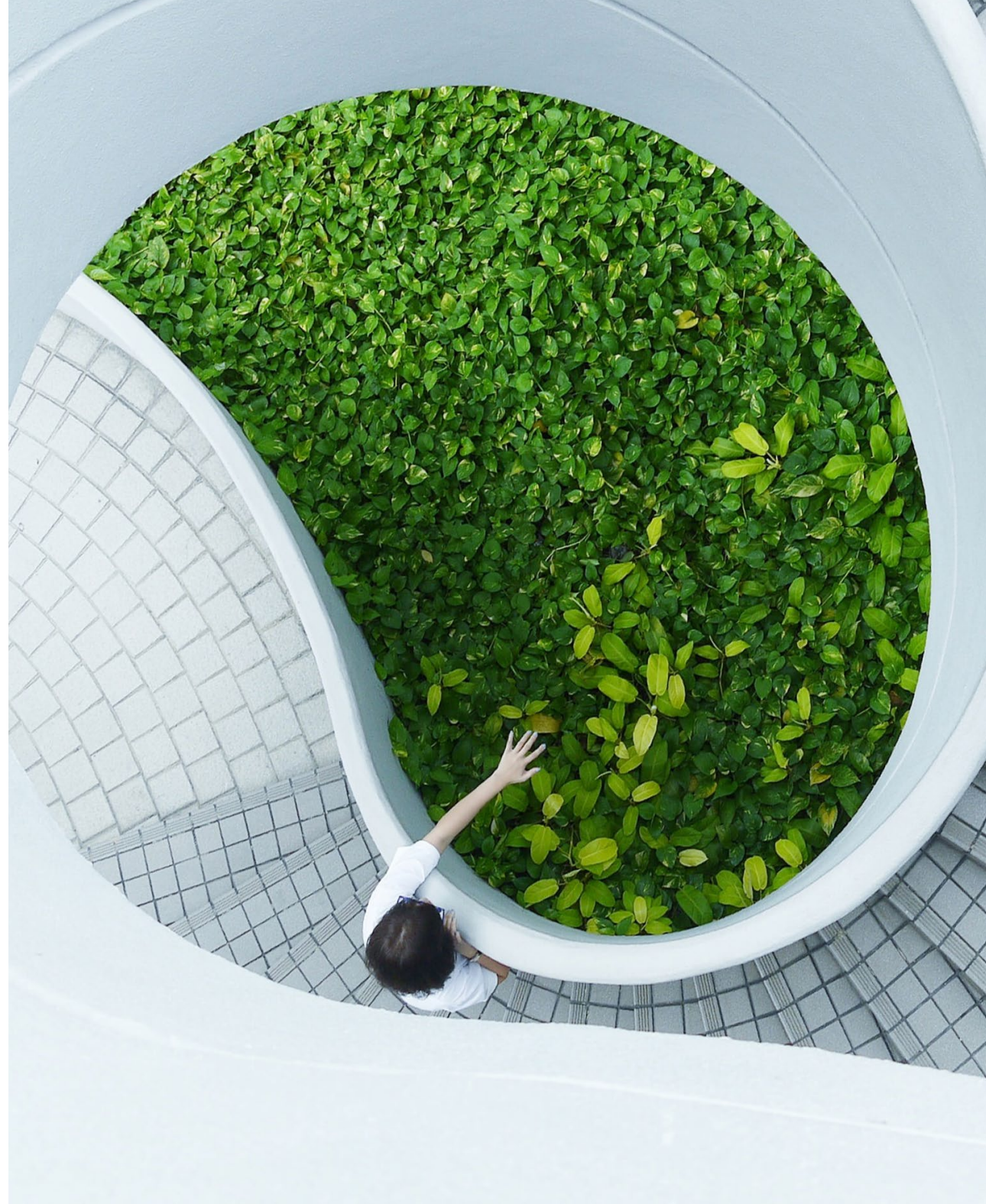


# Reduced environmental impact

KONE has always been a leader in energy saving and innovative technology in the industry, and enjoys a world-wide reputation. All our escalators and moving walks have achieved A+++ energy performance certificates based on the ISO Standard 25745-3.

## Make your moving walk more eco-efficient

- 01 Sustainable drive options**  
minimize energy consumption.
- 02 Long-lasting LED lighting**  
is up to 80% more efficient than fluorescent lighting and lasts up to 10 times longer.
- 03 Eco-efficient operational modes**  
save energy by slowing down or stopping the escalator completely when traffic is low. For example, when an escalator is empty, energy consumption is further reduced with KONE's smart star-delta operational mode, which regulates the current needed for different types of load situations.





# Moving walk sustainability

At KONE, we want to contribute to better urban living by helping people move around in and between buildings, in ways that are smooth and safe. A great deal of that is about sustainable practices.

## Green building certifications

Installing an eco-efficient KONE TransitMaster™ 165 can help achieve green building accreditations such as LEED or BREEAM certifications. For more information, contact your sales representative.

## Eco-efficient escalator

KONE TransitMaster™ 165 has achieved A+++ energy performance certificate based on ISO standard.

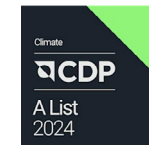
## EcoVadis Gold medals

KONE holds the EcoVadis Gold medal for its sustainability performance, being in the top 5% of all the assessed companies. The EcoVadis rating covers a broad range of non-financial management systems including environmental, labor and human rights, ethics, and sustainable procurement impacts.



## CDP's A list

KONE has been recognized by CDP for its actions towards reducing emissions, mitigating climate risks, and developing a low-carbon economy. KONE achieved a place on CDP's prestigious A List signifying that we rank among a small number of high performers.



## Forbes 2024 World's Best Employers list

KONE has been recognized as one of the best employers in the world by Forbes business magazine on their Forbes 2024 World's Best Employers list.





# Plan for success with KONE as your partner

Choose a partner with over a century of experience in delivering pioneering People Flow. Get expert advice from professionals and enjoy the peace of mind that comes with comprehensive support. KONE is with you every step of the way – from planning and design, through installation and maintenance, to modernization – for the entire life cycle of your building.

## Expert design and planning services

- Expert planning advice helps you specify the optimal solution for your building.
- Renowned engineering and design capabilities at your service can create tailor-made solutions to exactly meet your specifications.
- Easy-to-use online design tools save your time and effort during design process.
- Energy consumption calculations available for every individual escalator solution.
- Escalator lifecycle cost calculations available for budget planning.

## Safe and efficient installation

- Highly efficient installation methods result in considerable time savings and minimize disruption to other construction work.
- Strict quality criteria for each installation phase ensures the right fit every time.
- Continuous training, site audits, safety passports, certified Project Management, and proven methods ensure maximum site safety and on-time delivery.
- Eco-efficient installation processes minimize waste and maximize recycling.

## Quality assurance, modernization and professional maintenance

- KONE's own reliability laboratory tests and approves every component used in our escalator solutions.
- Modernization extends the equipment lifetime, and the recycling, reuse, and refurbishment of specific components and materials contribute to the circular economy. then put the point of global spare parts center and then last the one of preventive care.
- Preventive KONE Care® maintenance solutions and a comprehensive online service-reporting system make it easier to monitor and budget for escalator maintenance.
- Our global spare parts center stocks over 150,000 parts and offers 24-hour delivery for the most commonly requested parts.



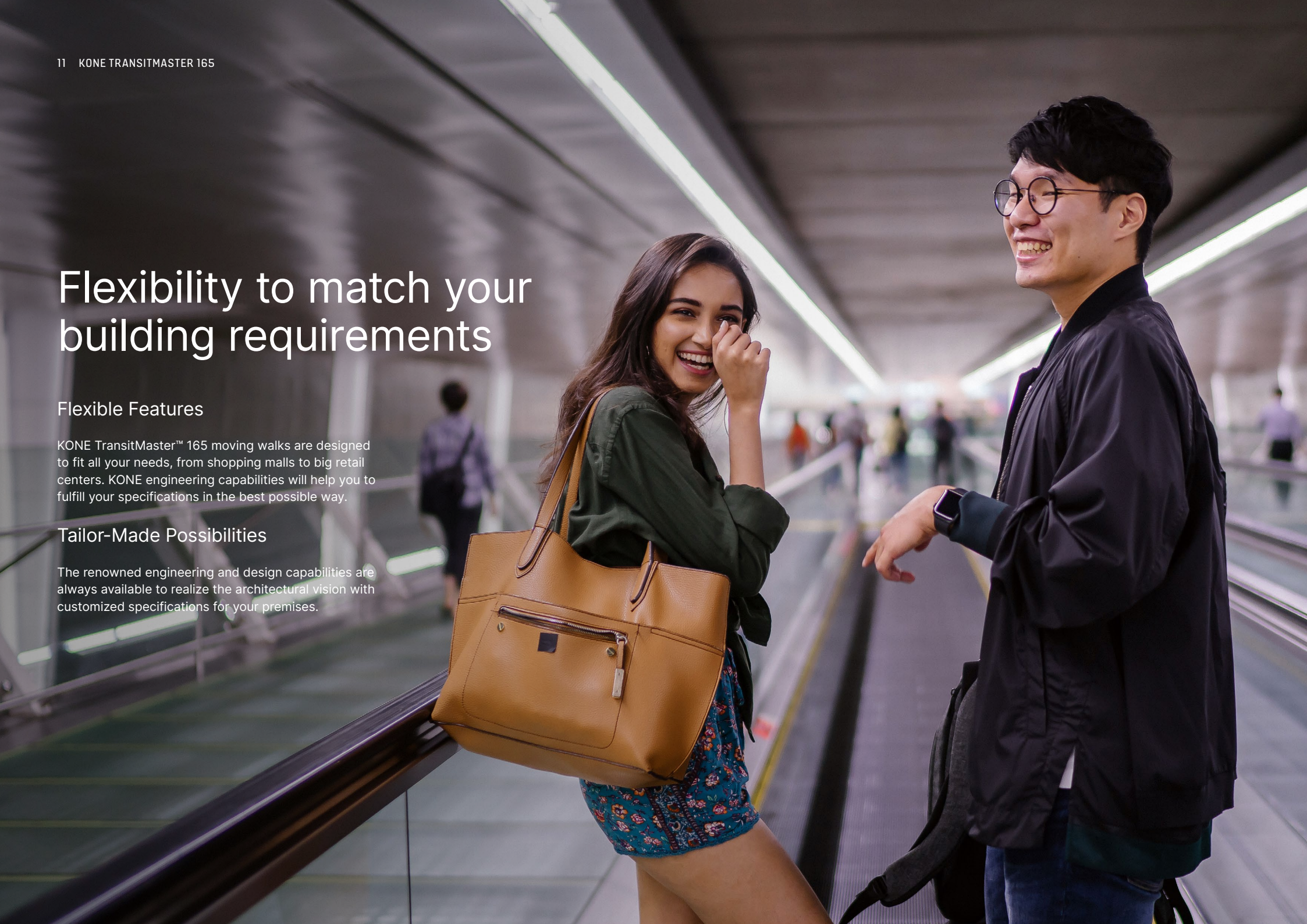
# Flexibility to match your building requirements

## Flexible Features

KONE TransitMaster™ 165 moving walks are designed to fit all your needs, from shopping malls to big retail centers. KONE engineering capabilities will help you to fulfill your specifications in the best possible way.

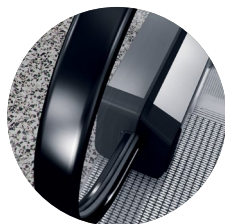
## Tailor-Made Possibilities

The renowned engineering and design capabilities are always available to realize the architectural vision with customized specifications for your premises.

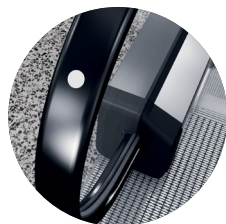




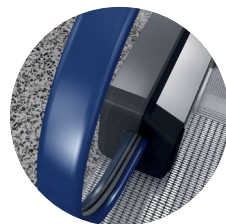
## Handrails



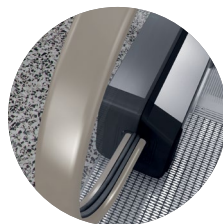
Black



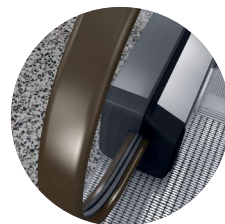
Black with white dots



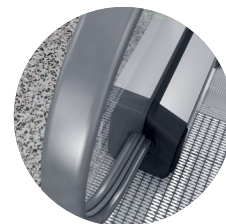
Blue



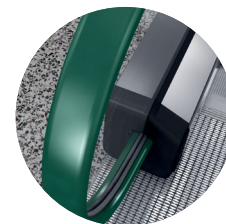
Beige



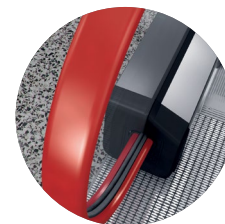
Brown



Gray

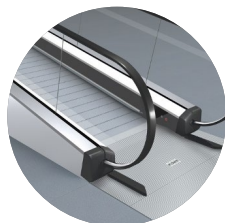


Green



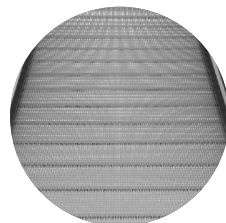
Red

## Balustrade

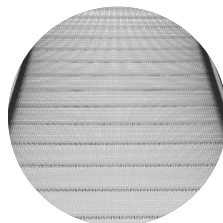


Safety glass 10 mm

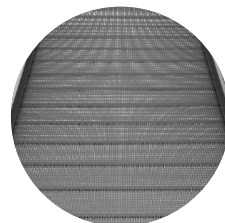
## Pallet color



Natural color aluminum

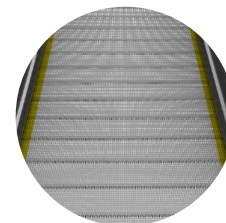


Silver painted aluminum



Black painted aluminum

## Pallet demarcation



Yellow painted on 2 sides

## Access covers



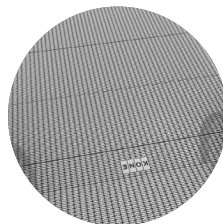
Ribbed aluminum natural color



Ribbed aluminum with black grooves



Aluminum with no painted stainless steel surface

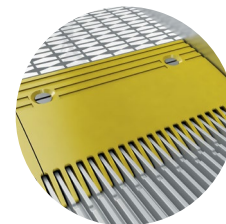


Aluminum with black painted stainless steel surface

## Comb



Aluminum comb segments



Aluminum with yellow powder coating



## Front plate

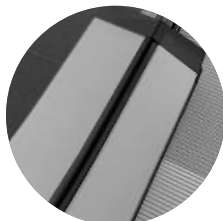


Black plastic



Stainless steel

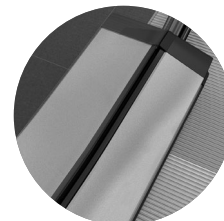
## Decking



Brushed satin stainless steel



Natural anodized aluminum



Powder coating silver (RAL9007)

## Skirt



Brushed stainless steel skirt with clear anti-friction coating



Sheet steel skirt with black anti-friction coating

## Display

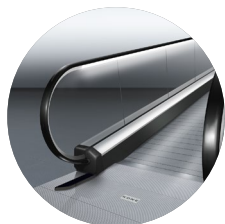


Diagnostic display



## Lighting

### LED handrail lighting

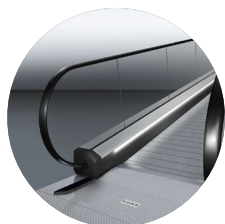


LED Handrail lighting

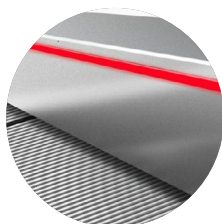


KONE Design Lighting,  
handrail

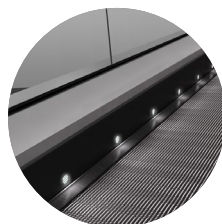
### LED skirt lighting



LED Skirt lighting

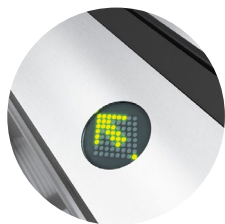


KONE Design Lighting, skirt



LED Skirt spot lighting

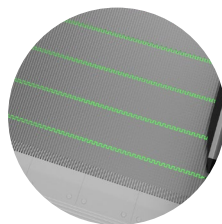
### Additional lighting



LED traffic light arrow in the  
decking



LED traffic light cube



Understep lighting green



LED Comb light





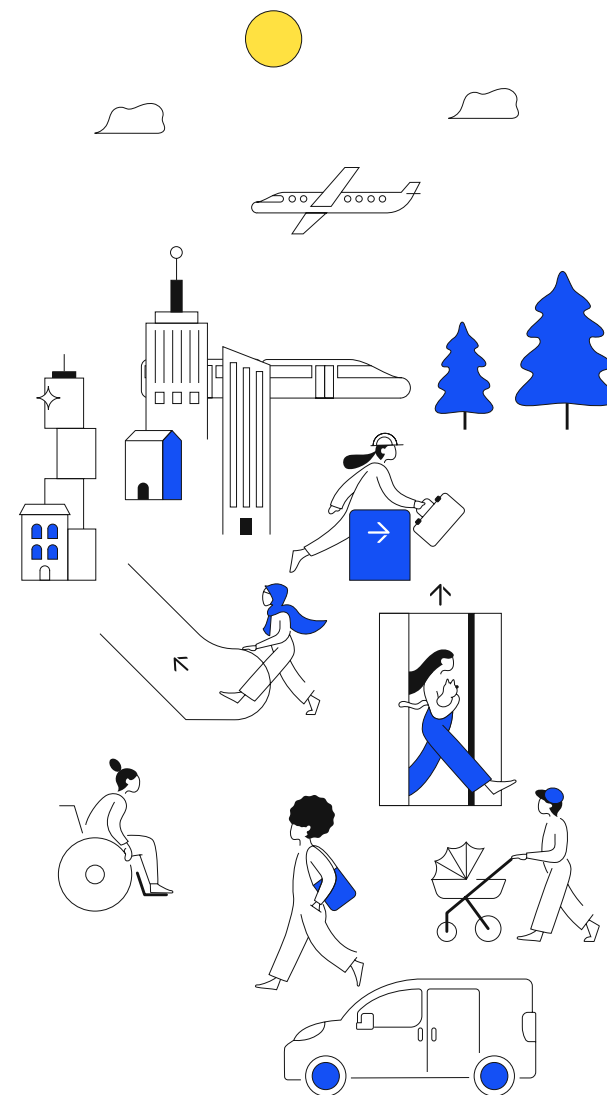
# Product specification

## Technical information

Applications	Public transportation, mainly airports
Environment	Indoor, outdoor but covered with roof, outdoor
Lenght	20–100 m
Inclination	0–6°
Group Arrangement	Single / Parallel in same running direction / Parallel in opposite running direction
Pallet width	1000 mm / 1200 mm / 1400 mm
Speed	0.5 m/s, 0.65 m/s, 0.75 m/s
Truss deflection	1/1000 and 1/1500
Gearbox type	Worm gear Helical gear
Drive location	Outside pallet band
Pallet chain type	Inside roller Ø75 × 23.5 mm
Power supply	50Hz / 380V / 220V 50Hz / 400V / 230V 50Hz / 415V / 240V 60Hz / 380V / 110V 60Hz / 220V / 110V
Operation mode	Standby speed Standby speed and/or automatic start/stop

## Design information

Front plate	Black plastic Stainless steel
Balustrade	Safety Glass panels 10 mm Balustrade height: 1000 mm
Decking	Brushed satin stainless steel Silver powder-coated carbon steel (RAL9007) Natural anodized aluminum
Skirt	Black sheet steel Stainless steel
Access cover	Ribbed aluminum with black grooves Ribbed aluminum natural color Aluminum with black painted stainless steel surface Aluminum with stainless steel surface
Pallet	Silver painted aluminum Black painted aluminum Natural aluminum
Pallet demarcation	Without Yellow painted on 2 sides
Comb segment	Aluminum Aluminum with yellow coating
Handrail lighting	LED continuous light - white KONE Design Lighting – flexible and modifiable RGBW LED lights for every occasion
Skirt lighting	LED continuous light - white LED spot KONE Design Lighting – flexible and modifiable RGBW LED lights for every occasion







KONE provides innovative and eco-efficient solutions for elevators, escalators, automatic building doors and the systems that integrate them with today's intelligent buildings. We support our customers every step of the way: from design, manufacturing and installation to maintenance and modernization. KONE is a global leader in managing the smooth flow of people and goods throughout buildings. This makes us a reliable partner throughout the life cycle of buildings. We are fast, flexible, and we have a well-deserved reputation as a technology leader, with such innovations as KONE 24/7 Connected Services and KONE UltraRope®. KONE employs over 63,000 dedicated experts to serve you globally and locally.

## KONE Corporation

### Corporate offices

Keilasatama 3  
P.O. Box 7  
Espoo, 02150  
Finland

Tel.: +358 (0)204 75 1  
Fax: +358 (0)204 75 4496

Business Identity Code: 1927400-1

This publication is for general informational purposes only and we reserve the right at any time to alter the product design and specifications. No statement in this publication shall be construed as a warranty or condition, express or implied, as to any product, its fitness for any particular purpose, merchantability, quality or representation of the terms of any purchase agreement. Minor differences between printed and actual colors may exist. KONE MonoSpace® DX, KONE EcoDisc® and People Flow® are registered trademarks of KONE Corporation. Copyright © 2025 KONE Corporation.

[www.kone.com](http://www.kone.com)

**Dedicated to  
People Flow™**